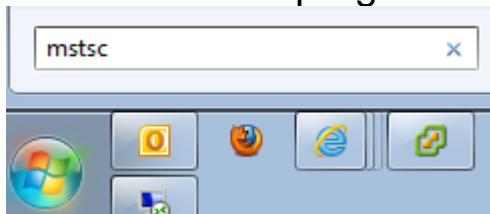
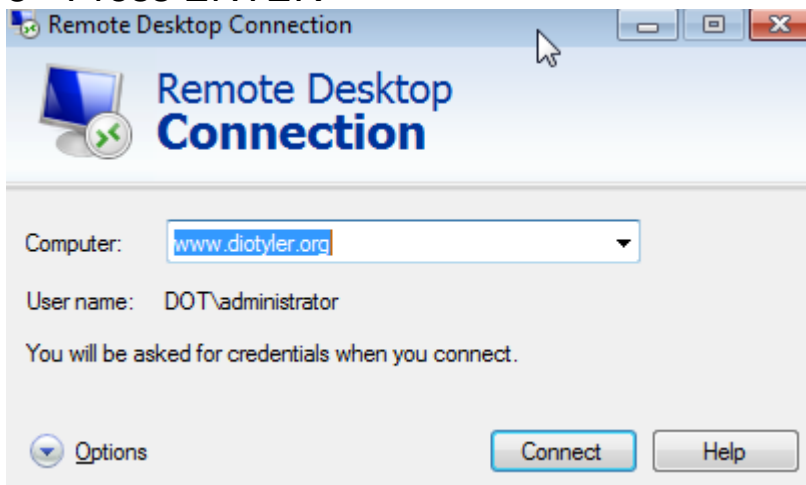


Parish Qbooks - Create the RDP connection instead of downloading it.

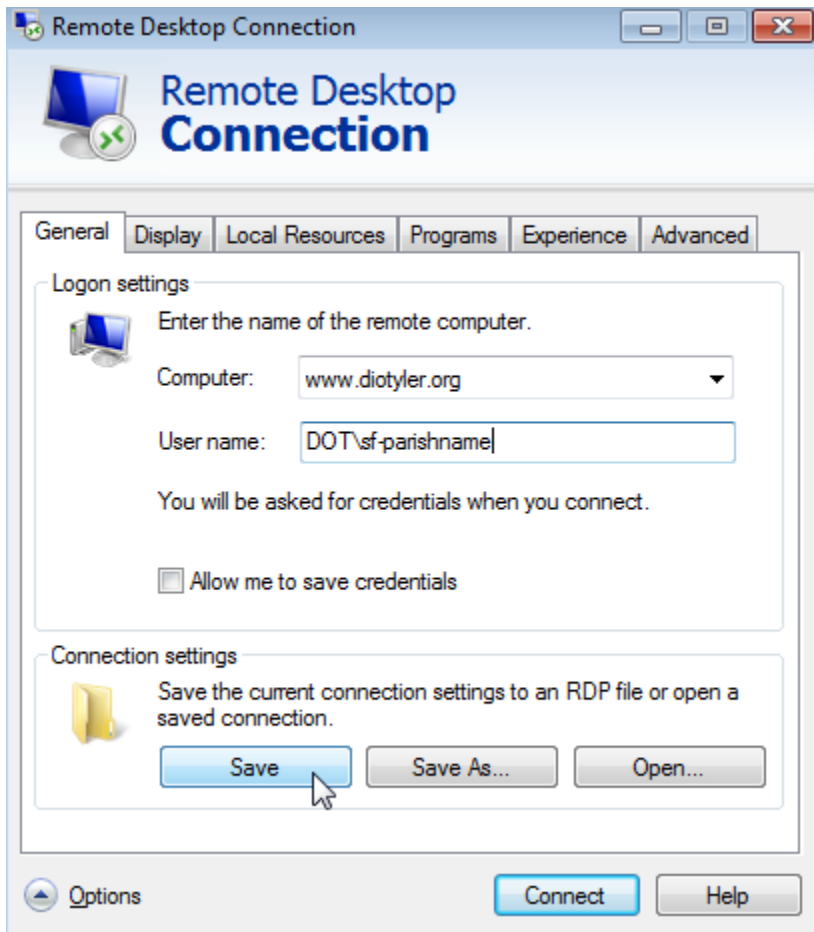
- 1 - Click START | RUN... (Windows Vista or Windows 7 users may not have the RUN command, so just type in the program name in the next step)
- 2 - Enter in this program: MSTSC



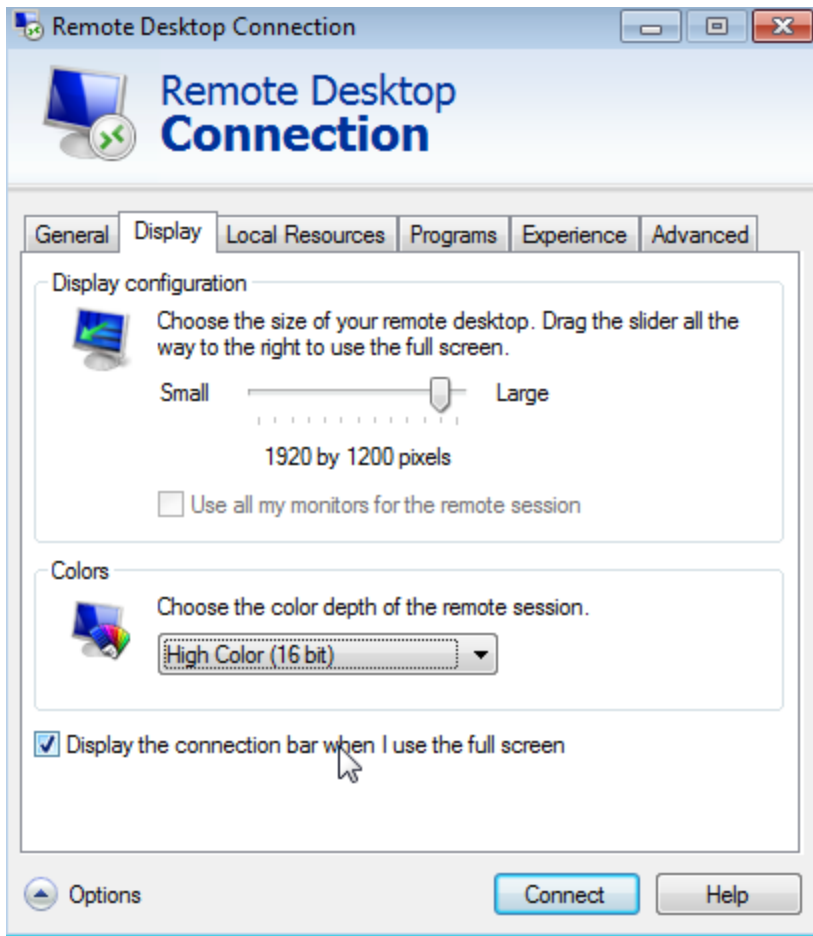
- 3 - Press ENTER



- 4 - Click OPTIONS and enter in your PARISH SERVER LOGON USERNAME

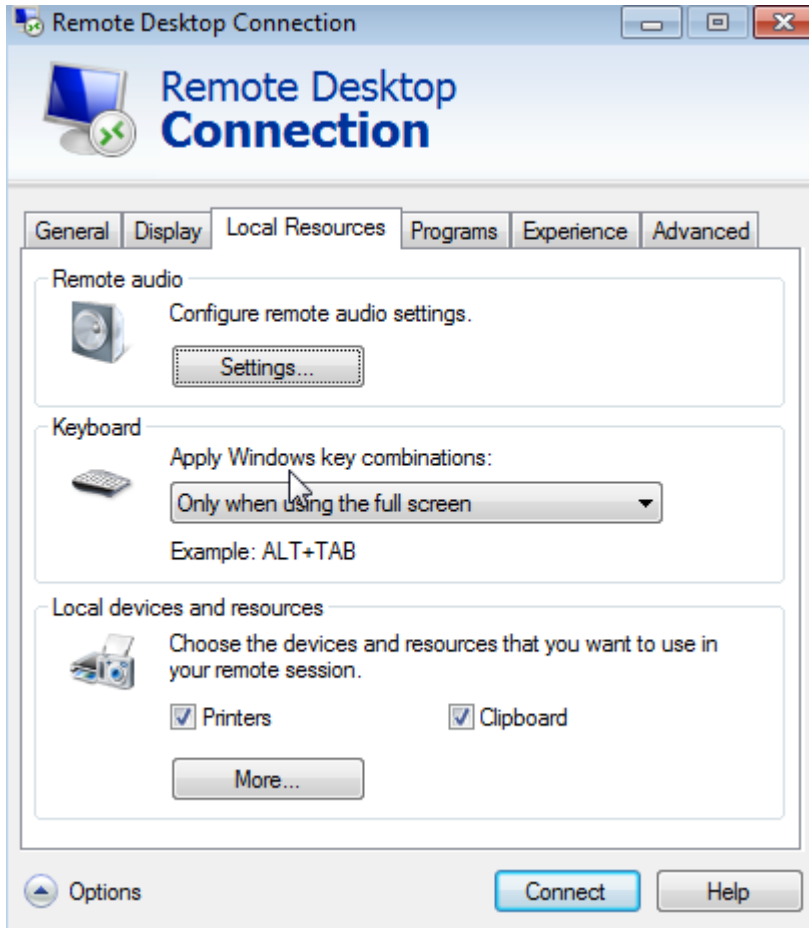


- 5 - Click the TAB NAMED: DISPLAY

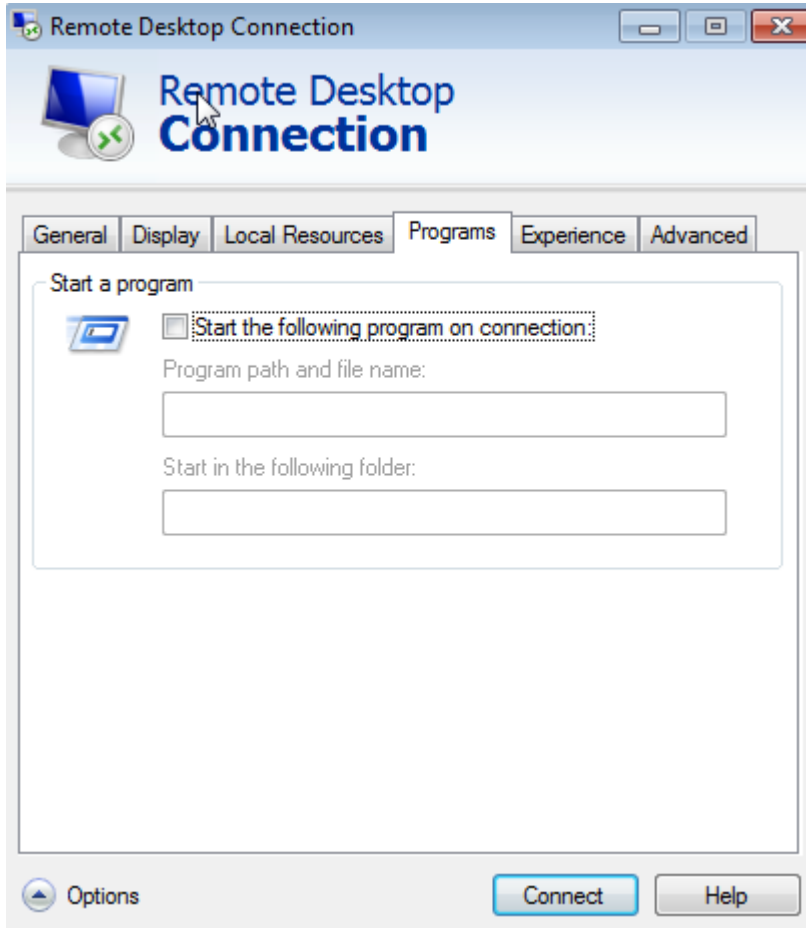


- Change the screen resolution size here by sliding the bar from small to large ... this can also be changed at any time if the size needs to be adjusted.
- To help speed up the program displayed on your computer over the internet link, use 16-bit color or LESS... Less is better for speed.

- 6 - Click the TAB NAMED: LOCAL RESOURCES :: these settings should work fine

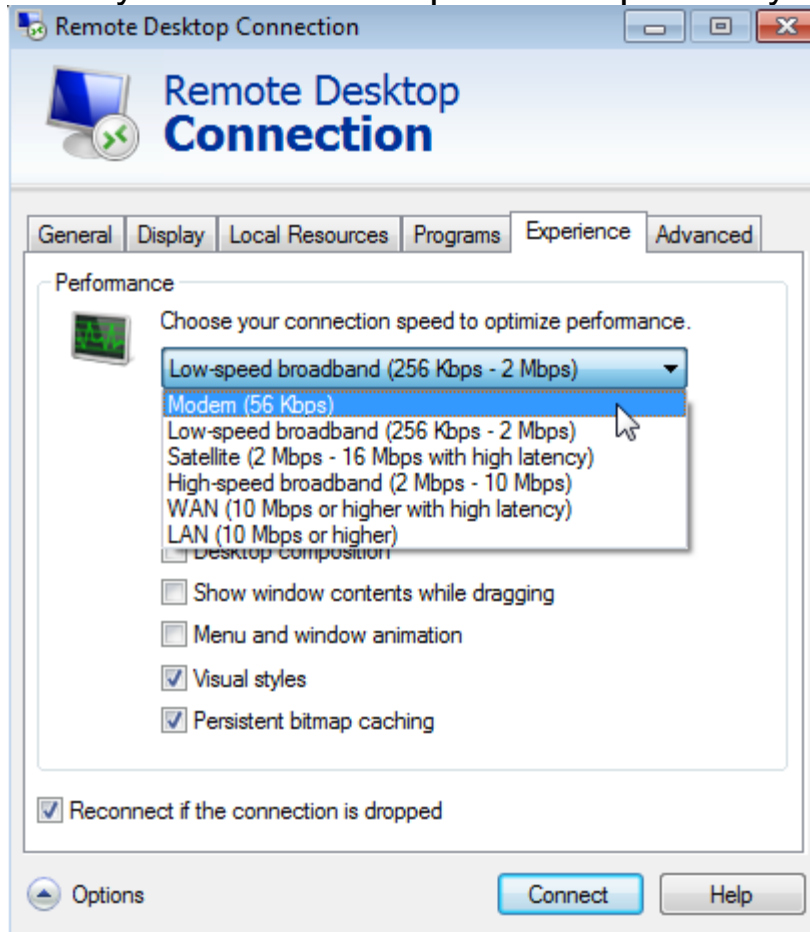


- 7 - Click the TAB NAMED: PROGRAMS :: these settings should work fine

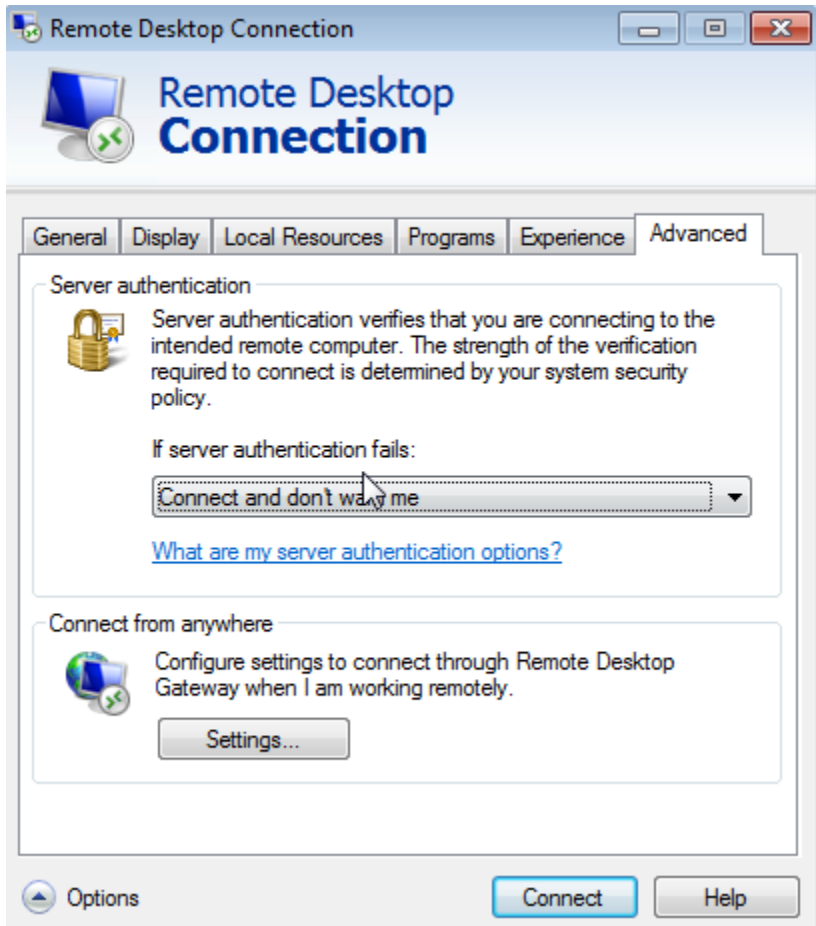


- 8 - Click the TAB NAMED: EXPERIENCE :: select the connection that best matches your INTERNET CONNECTION speed (again,

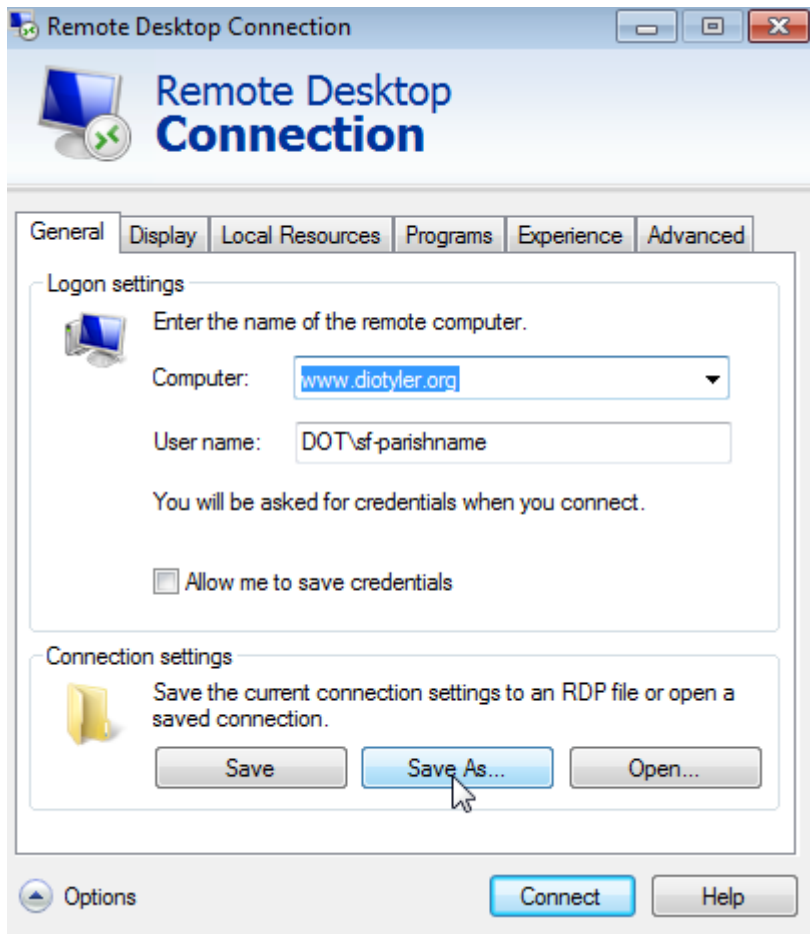
usually the SLOWER options will provide you the best experience)



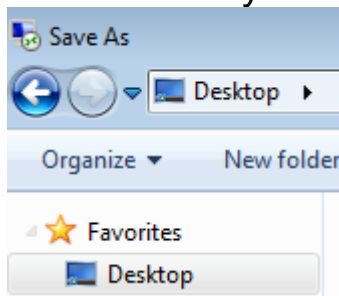
- 9 - Click the TAB NAMED: ADVANCED :: these settings should work fine



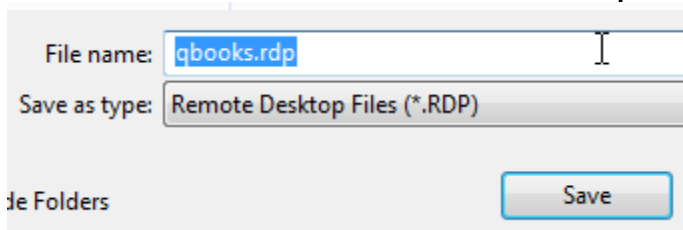
- 10 - Click the TAB NAMED: GENERAL



- 11 - Click SAVE AS ...
- 12 - Save to your DESKTOP



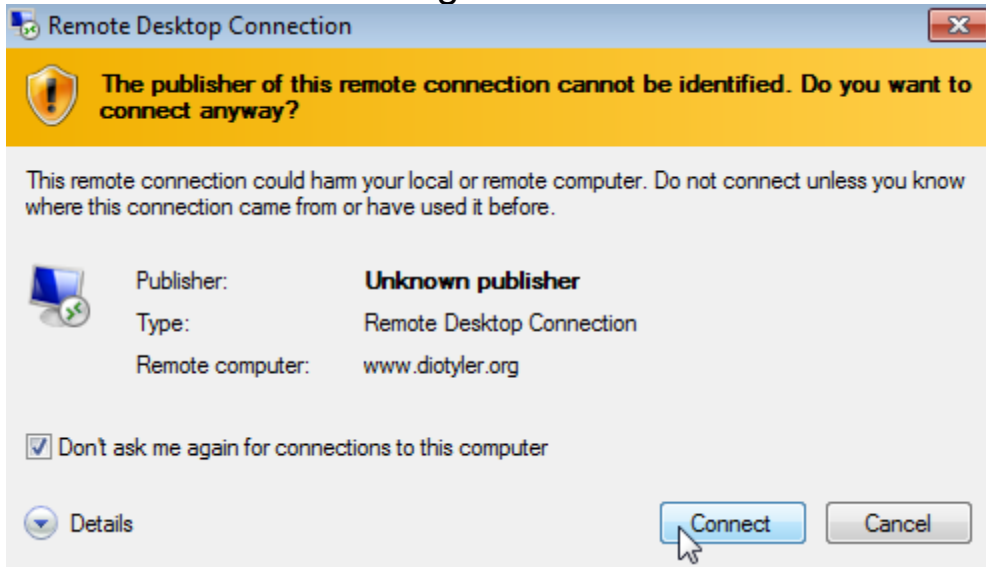
- 13 - Name the RDP connection: qbooks.rdp



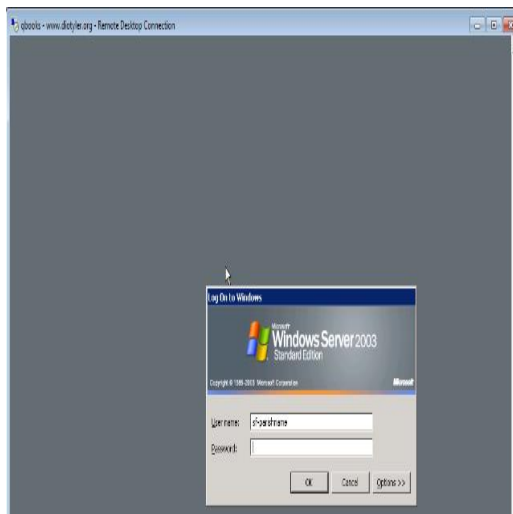
- 14 - Click SAVE
- 15 - You should now have this RDP connection saved to your desktop. This is NOW what you will double-click to remote into the Qbooks Terminal Server.



- 16 - Double-click it and this will probably appear. CHECK the box labeled: Don't ask me again for connections to this computer



- 17 - Click CONNECT



- 18 - When you see this screen you have **SUCCESSFULLY** connected to the **QBOOKS TERMINAL SERVER LOGON** window...