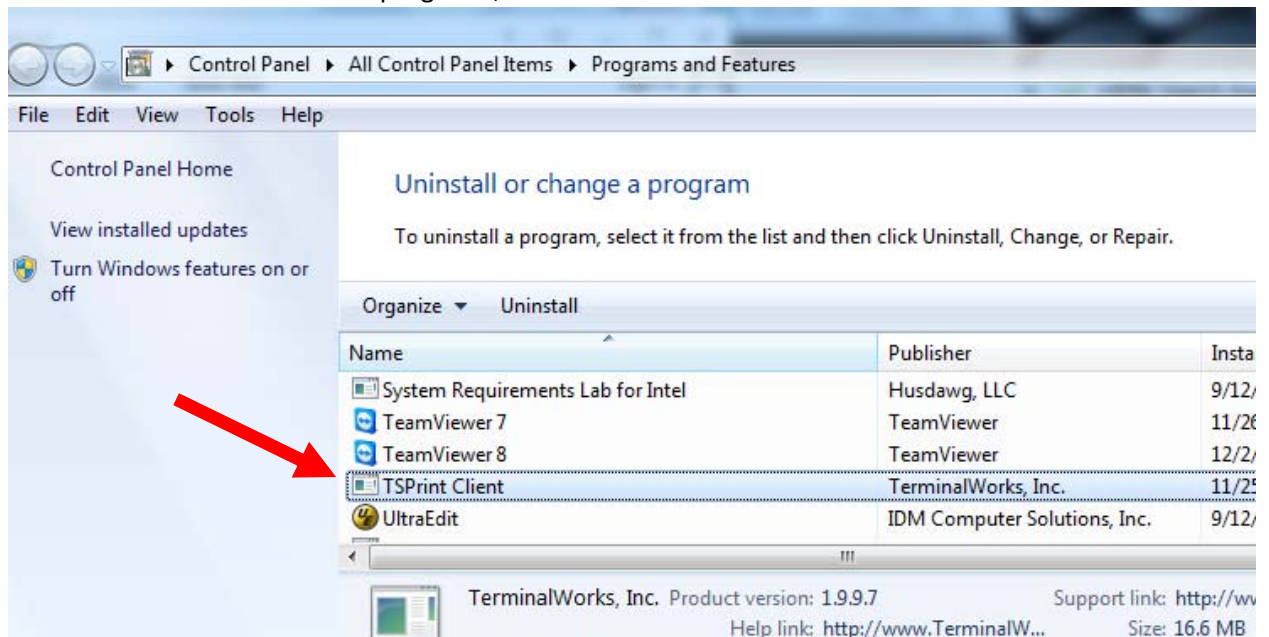


# How do I check to see if TSPRINT is already installed?

Thursday, December 12, 2013

1. If you need to see if TSPRINT is already installed
2. Open CONTROL PANEL
3. Open add/remove programs OR Programs and Features
4. Scroll down the list of installed programs, and look for TSPRINT CLIENT



5. If you need to download and install TSPRINT:
  - a. Goto <http://www.data911.pro/portal/dio/upd/universalprintdriver.html>
6. If TSPRINT is already installed then check to see if there are 2 firewalls running:
  - a. Windows FIREWALL
  - b. Additional firewall from Norton, or other security product.
  - c. If there are 2 firewalls running, disable the WINDOWS FIREWALL. Go here for instructions on how to disable the windows firewall...
    - i. <http://www.data911.pro/portal/dio/index.html>