



HOW TO CHANGE THE SIZE OF YOUR TERMINAL SERVER WINDOW SIZE

Updated: Thursday, August 02, 2012

PURPOSE:

When logging onto a terminal server your session window is either too big or too small. How do you EASILY change it to your liking?

PROCESS:

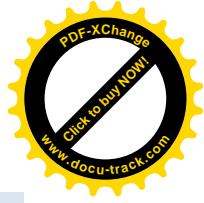
First thing to note is that the actual RDP connection icon is edit-able and not a shortcut to an RDP connection. Generally speaking, a "shortcut" to an RDP connection (or any program) will have a little arrow on the icon (however, this is not always the case because users can customize icons, etc. on their windows desktops).



Actual program will usually look like this for example:

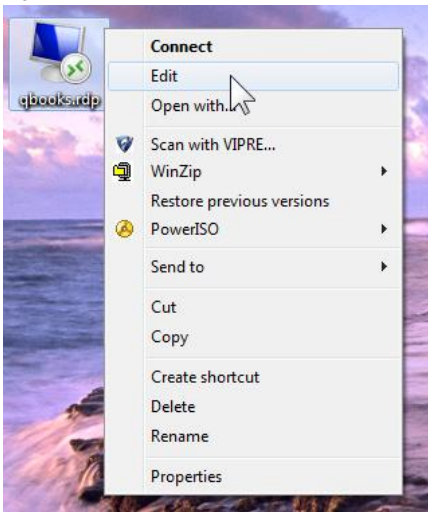


A shortcut to the same program will usually have that tiny little curved arrow

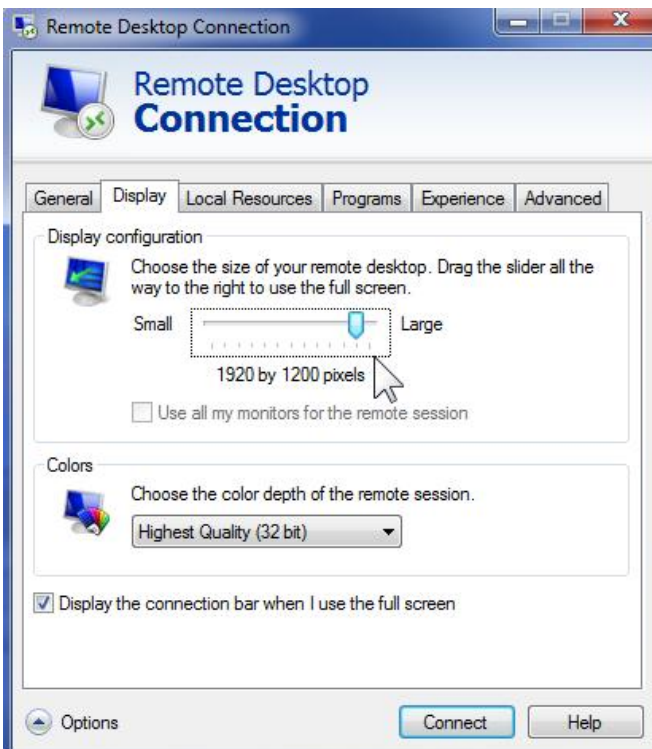


LET'S RESIZE THE SESSION WINDOW:

1. right-click the actual RDP connection



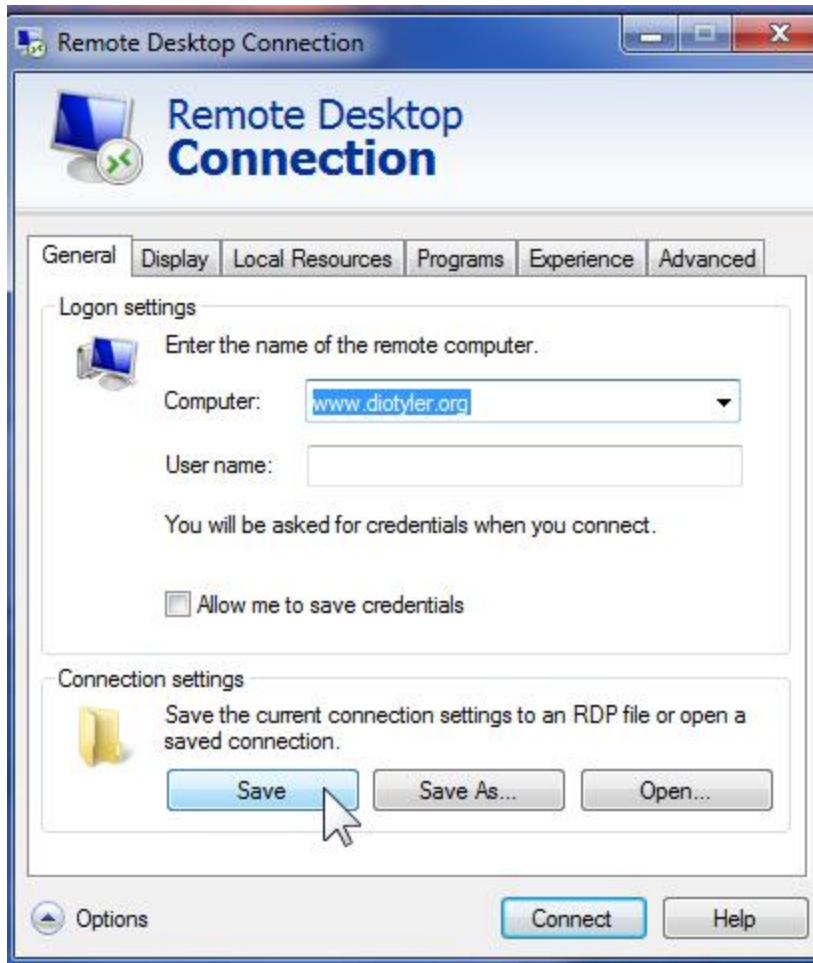
2. Click EDIT
3. Select the named TAB: DISPLAY



4. Slide the slider to any size you want....



5. Now, this is important...
6. Click the named TAB: GENERAL
7. Click SAVE
 - a. If you don't SAVE IT, then it won't remember the new size next time.



8. That should do it.
9. Process complete.